

FABRIC-SHIELDTM STORM PANEL

MAXIMUM ALLOWABLE PRESSURES :

DIRECT MOUNT	TRACK MOUNT
-66.0 PSF	-60.0 PSF
+62.0 PSF	+62.0 PSF

MAXIMUM ALLOWABLE SPAN: 9' - 2 7/8"

(FOR ALL MOUNTING CONDITIONS)

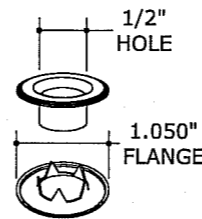
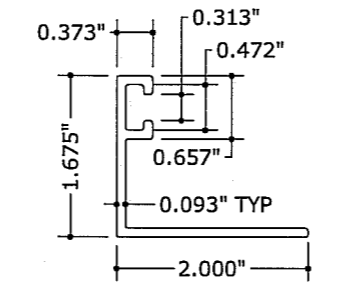
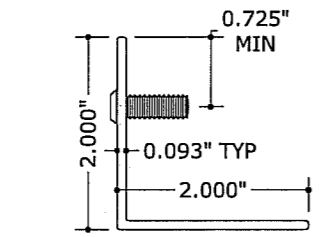
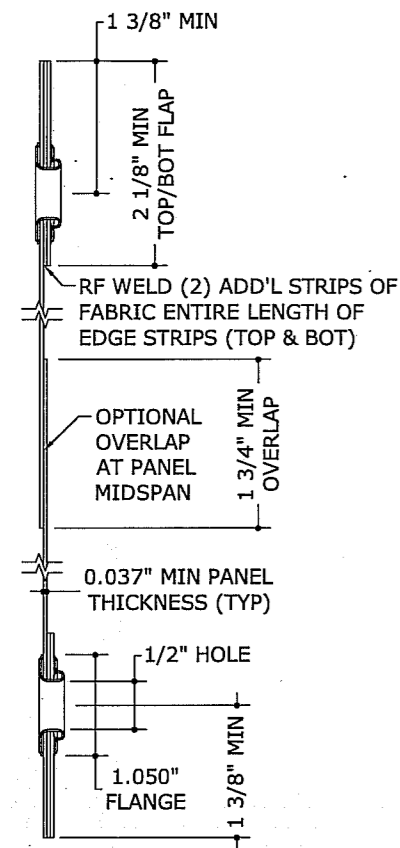
MINIMUM ALLOWABLE WIDTH (NON-SPAN DIMENSION):	12.0"
MINIMUM ALLOWABLE SPAN:	12.0"

SPAN NOTES:

1. ALLOWABLE PRESSURES SHALL NOT BE EXCEEDED.
2. PANEL SPANS LONGER THAN MAXIMUM NOTED ABOVE ARE NOT ACCEPTABLE.
3. PANEL SPANS LESS THAN MINIMUM NOTED ABOVE ARE NOT ACCEPTABLE.
4. NO SEPARATION FROM GLASS IS REQUIRED WHEN PANEL SPAN IS GREATER THAN MINIMUM SPAN NOTED ABOVE.
5. VALID FOR PANELS MOUNTED VERTICALLY OR HORIZONTALLY.

GENERAL NOTES:

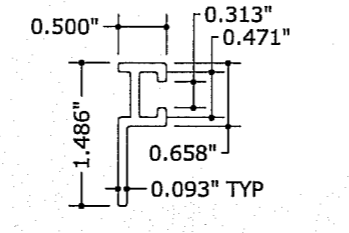
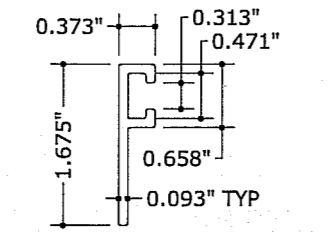
1. THIS STORM PANEL SYSTEM HAS BEEN TESTED AND EVALUATED AS A LARGE MISSILE IMPACT PROTECTIVE SYSTEM IN ACCORDANCE WITH THE 2004 FLORIDA BUILDING CODE AND THE 2003 INTERNATIONAL BUILDING/RESIDENTIAL CODE, FOR USE OUTSIDE FLORIDA'S HIGH VELOCITY HURRICANE ZONE (HVHZ) ONLY.
2. THIS SHUTTER SYSTEM HAS BEEN SUBMITTED TO ICC-ES FOR EVALUATION AS A LARGE MISSILE IMPACT PROTECTIVE SYSTEM.
3. NO 33-1/3% INCREASE IN ALLOWABLE STRESS HAS BEEN USED IN THE DESIGN OF THIS PRODUCT. WIND LOAD DURATION FACTOR Cd=1.6 HAS BEEN USED FOR WOOD ANCHOR DESIGN.
4. POSITIVE AND NEGATIVE DESIGN PRESSURES TO BE USED WITH THESE DRAWINGS SHALL BE DETERMINED BY OTHERS FOR SPECIFIC JOBS IN ACCORDANCE WITH THE GOVERNING CODE. WHEN CALCULATING PRESSURES PER ASCE 7-98 (OR LATER EDITION), USE OF DIRECTIONALITY FACTOR Kd=0.85 IS ALLOWED.
5. THE SHUTTER SYSTEM DETAILED HEREIN IS GENERIC AND DOES NOT PROVIDE INFORMATION FOR A SPECIFIC SITE. IF SITE CONDITIONS DEVIATE FROM THE CONDITIONS DETAILED HEREIN, A LICENSED ENGINEER OR REGISTERED ARCHITECT SHALL PREPARE SITE SPECIFIC DOCUMENTS TO BE USED IN CONJUNCTION WITH THIS DOCUMENT.
6. PERMIT HOLDER SHALL VERIFY THE ADEQUACY OF THE EXISTING STRUCTURE TO WITHSTAND NEW SUPERIMPOSED LOADS.
7. STORM PANELS SHALL BE PVC COATED WOVEN POLYESTER FABRIC (THICKNESS t=0.037") WITH A MIN. Fu=15.794 KSI.
8. PANELS SHALL BE PERMANENTLY LABELED WITH A MINIMUM OF ONE LABEL PER PANEL AS FOLLOWS:
WAYNE-DALTON CORP.
FLB DWG NO. 04-WDF-0004
REFERENCE FLORIDA STATEWIDE APPROVAL
9. STORM PANELS HAVE BEEN DESIGNED AND TESTED TO THE MAXIMUM SPAN AND LOADS SHOWN ON THESE DRAWINGS. REFERENCE HURRICANE ENGINEERING & TESTING, INC (HETI OF MIAMI, FL) TEST REPORTS Nos. HETI-04-1907, HETI-04-1390, HETI-03-1873, HETI-03-1875, HETI-03-1885a, HETI-03-1885b, & HETI-04-T224.
10. PANELS MAY BE MOUNTED HORIZONTALLY WHERE APPLICABLE (i.e. WITH LINE OF ANCHORAGE IN VERTICAL DIRECTION).
11. PANELS MAY BE INSTALLED WITH OPTIONAL SIDE ANCHORS AS DEPICTED HEREIN, HOWEVER SYSTEM PERFORMANCE IS BASED ON TESTING WITHOUT SIDE ANCHORS. TESTS SHOW A FAILURE LOAD OF 987 LBS FOR THE #4 GROMMET AND 4"x3" 3-PLY RF-WELDED FABRIC CONSTRUCTION AT EACH SIDE ANCHOR (ANCHOR NOT CONSIDERED).
12. ALL BOLTS & WASHERS SHALL BE ZINC COATED, GALVANIZED OR STAINLESS STEEL WITH A MINIMUM TENSILE STRENGTH OF 60 KSI.
13. ALL ACCEPTANCE CRITERIA HAVE BEEN MET FOR THIS SHUTTER AS A NON-POROUS SYSTEM, AS DEFINED IN ASTM E1996. IN KEEPING WITH THIS STANDARD, NO MINIMUM SEPARATION FROM THE GLAZING BEING PROTECTED IS REQUIRED, AND BREAKING OF THIS GLAZING DOES NOT COMPROMISE THE BUILDING ENVELOPE.



2
1 6" = 1'-0"

3
1 6" = 1'-0"

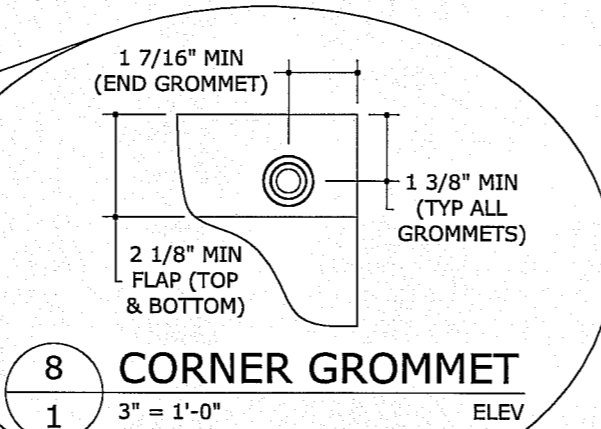
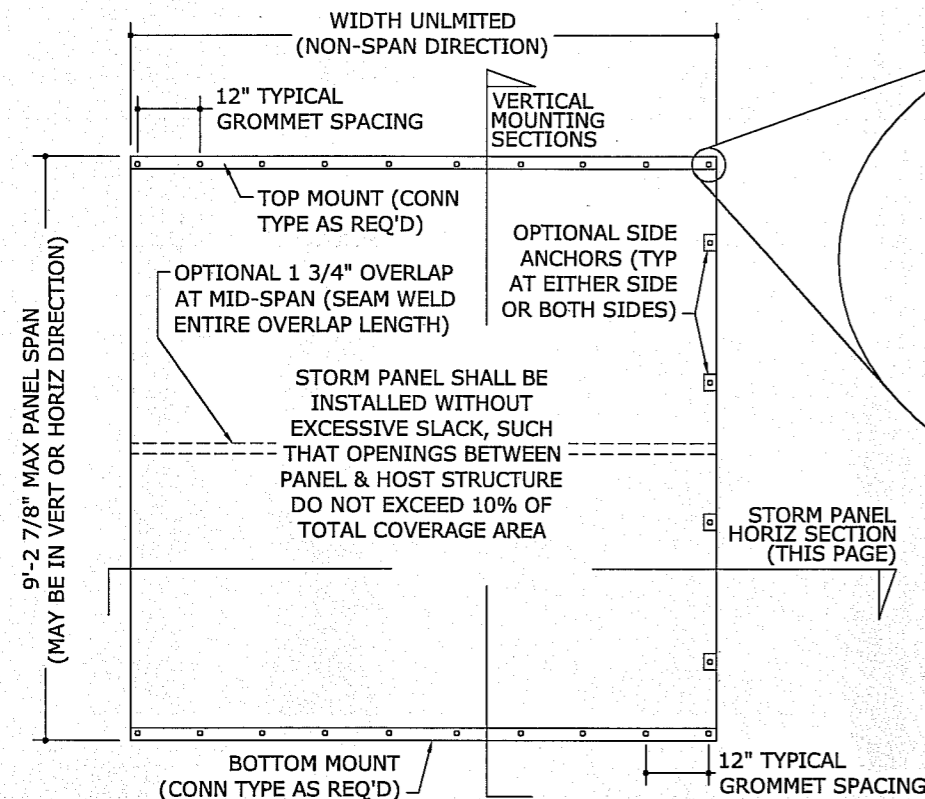
6
1 6" = 1'-0"



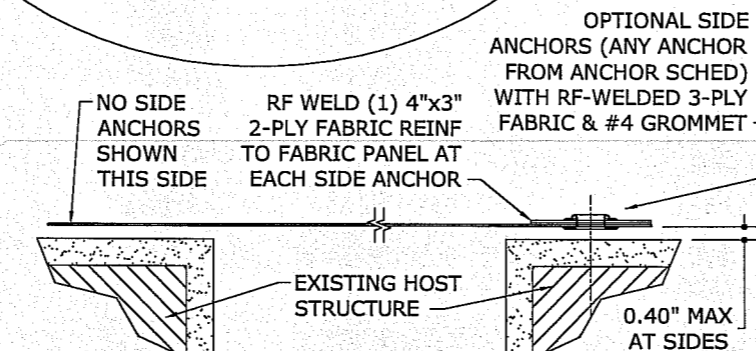
4
1 6" = 1'-0"

5
1 6" = 1'-0"

1
1 6" = 1'-0"



8
1 3" = 1'-0"



9
1 N.T.S.

7
1 N.T.S.

FRANK L. BENNARDO, P.E.
PE0046549
04/13/2007
LICENSED AFFILIATE OF
ENGINEERING EXPRESS
160 SW 12th AVENUE, #106
DEERFIELD BEACH, FL 33442
Ph: (954) 354-0660 Fax: (954) 354-0443
WWW.ENGENXP.COM
CERT OF AUTH #886

MANUFACTURED BY:
WAYNE-DALTON CORP
3395 ADDISON DRIVE
PENSACOLA, FL 32514
www.wayne-dalton.com
FABRIC-SHIELD STORM PANEL
FLORIDA STATEWIDE APPROVAL

REMARKS	DWN	CHKD	DATE
ADD'L ANCHORS	KL	CL	04/13/07
ANCHOR SCHED MODS	CL	FLB	10/5/04
2004 FBC	CL	FLB	8/5/05
ADD 'SPDS' OPTION	CL	FLB	11/17/05
OPTL ANCHORS AT SIDES	CL	FLB	4/10/06

THIS DOCUMENT IS THE PROPERTY OF FRANK L. BENNARDO, P.E. AND SHALL NOT BE REPRODUCED OR TRANSMITTED IN ANY FORM OR BY ANY MEANS, ELECTRONIC OR MECHANICAL, INCLUDING PHOTOCOPYING, RECORDING, OR BY ANY INFORMATION STORAGE AND RETRIEVAL SYSTEM. ANY ALTERATIONS, ADDITIONS, HIGHLIGHTS, OR OTHER MARKINGS TO THIS DOCUMENT ARE NOT PERMITTED AND INVALIDATE OUR CERTIFICATION.

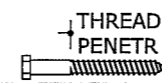

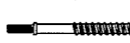
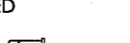
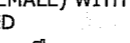
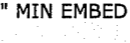
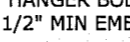
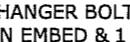
COPYRIGHT 2004 FRANK L. BENNARDO P.E.
04-WDF-0004
PAGE SCALE:
DESCRIPTION:
WAYNE-DALTON PART #317477

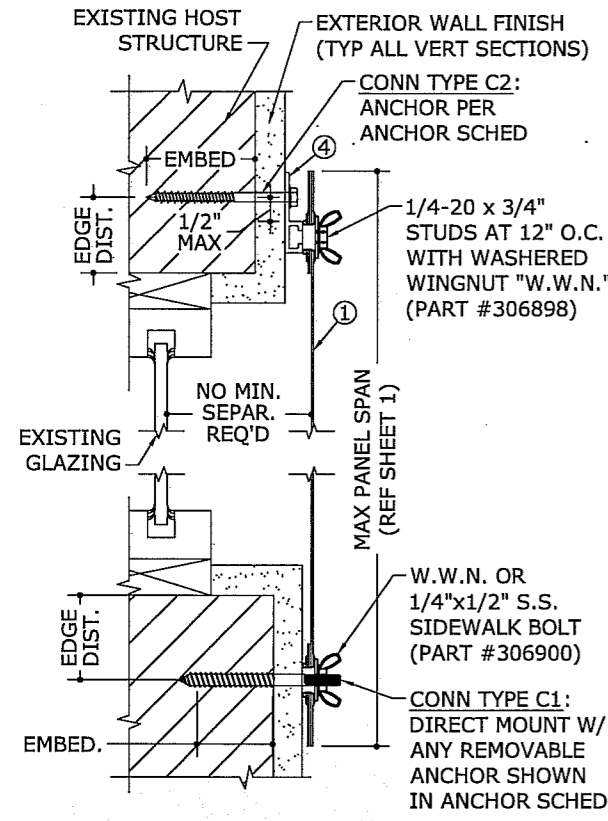
1 4

REMARKS	DWN	CHKD	DATE
ADD'L ANCHORS	KL	CL	04/13/07
ANCHOR SCHED MODS	CL	FLB	10/5/04
ADD "SPDS" OPTION	CL	FLB	8/5/05
OPT'L ANCHORS AT SIDES	CL	FLB	11/17/05
	CL	FLB	4/7/06

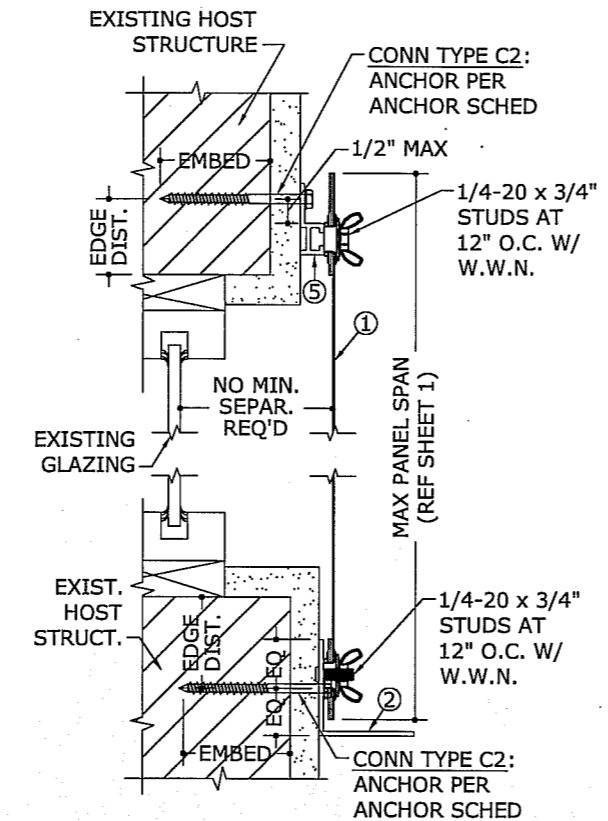
THIS DOCUMENT IS THE PROPERTY OF FRANK L. BENNARDO, P.E. AND SHALL NOT BE REPRODUCED IN WHOLE OR PART WITHOUT WRITTEN CONSENT OF FRANK L. BENNARDO, P.E.
* ALTERATIONS, ADDITIONS, HIGHLIGHTING, OR OTHER MARKINGS TO THIS DOCUMENT ARE NOT PERMITTED AND INVALIDATE OUR CERTIFICATION.

ANCHOR SCHEDULE 1

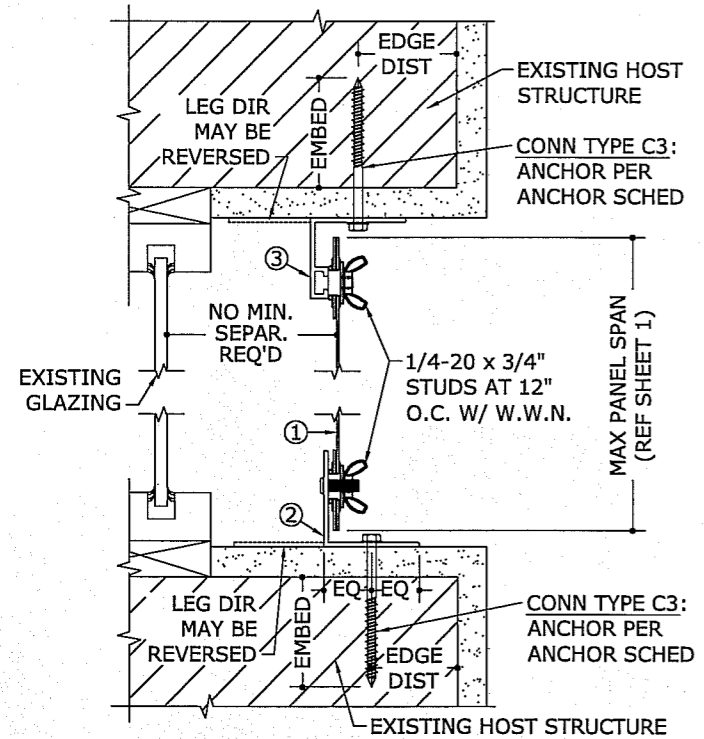
HOST STRUCT.	ANCHOR	LOAD (psf)	3/4" MIN EDGE DISTANCE (UNLESS OTHERWISE NOTED)								
			Spans Up To 4'-0"			Spans Up To 6'-0"			Spans Up To 9'-3"		
			CONN TYPE	CONN TYPE	CONN TYPE	CONN TYPE	CONN TYPE	CONN TYPE	CONN TYPE	CONN TYPE	CONN TYPE
WOOD (G=0.55)	1/4" LAG SCREW WITH MIN 2-3/32" THREAD PENETR. 	30	12"	12"	5"	11"	11"	4"	7"	7"	
		38	12"	12"	4"	8"	8"	3"	5"	5"	
		47	10"	10"	3"	7"	7"		4"	4"	
		54	9"	9"	3"	6"	6"		4"	4"	
	66	7"	7"		5"	5"		3"	3"		
	1/4" TAPCON (ELCO OR ITW) OR #14 WOOD SCREW WITH 1-1/2" MIN EMBED 	30	12"	12"	6"	11"	11"	4"	7"	7"	3"
		38	12"	12"	5"	9"	9"	3"	6"	6"	
		47	10"	10"	4"	7"	7"	3"	4"	4"	
		54	9"	9"	3"	6"	6"		4"	4"	
	66	7"	7"	3"	5"	5"		3"	3"		
	1/4" ITW TAPCON SG WITH 1-1/2" MIN EMBED 	30	12"	12"	12"	12"	12"	12"	12"	12"	12"
		38	12"	12"	12"	12"	12"	12"	12"	12"	11"
47		12"	12"	12"	12"	12"	12"	11"	11"	7"	
54		12"	12"	12"	12"	12"	12"	9"	9"	6"	
66	12"	12"	12"	12"	12"	9"	8"	8"	4"		
3/16" ITW SAMMY SUPER SCREW WITH 1-1/2" MIN EMBED 	30	12"	12"	12"	12"	12"	12"	12"	12"	12"	
	38	12"	12"	12"	12"	12"	12"	12"	12"	10"	
	47	12"	12"	12"	12"	12"	12"	12"	12"	7"	
	54	12"	12"	12"	12"	12"	10"	10"	10"	6"	
66	12"	12"	12"	12"	12"	8"	9"	9"	4"		
1/4" ELCO PANELMATE (MALE OR FEMALE) WITH 1-7/8" MIN EMBED 	30	12"	12"	12"	12"	12"	12"	12"	12"	12"	
	38	12"	12"	12"	12"	12"	12"	12"	12"	10"	
	47	12"	12"	12"	12"	12"	12"	12"	12"	8"	
	54	12"	12"	12"	12"	12"	11"	12"	10"	6"	
66	12"	12"	12"	12"	12"	9"	10"	10"	5"		
1/4" HANGER BOLT (MALE) W/ 2 1/2" MIN EMBED & 1 1/4" E.D. 	30	12"	12"	5"	11"	11"	4"	7"	7"		
	38	12"	12"	4"	8"	8"	3"	5"	5"		
	47	10"	10"	3"	7"	7"		4"	4"		
	54	9"	9"	3"	6"	6"		4"	4"		
66	7"	7"		5"	5"		3"	3"			
5/16" HANGER BOLT (MALE) W/ 2 1/2" MIN EMBED & 1 1/4" E.D. 	30	12"	12"	12"	12"	12"	12"	12"	12"	12"	
	38	12"	12"	12"	12"	12"	12"	12"	12"	12"	
	47	12"	12"	12"	12"	12"	12"	12"	12"	9"	
	54	12"	12"	12"	12"	12"	12"	12"	12"	7"	
66	12"	12"	12"	12"	12"	10"	11"	11"	6"		
3/8" HANGER BOLT (MALE) W/ 3" MIN EMBED & 1 1/2" E.D. 	30	12"	12"	12"	12"	12"	12"	12"	12"	12"	
	38	12"	12"	12"	12"	12"	12"	12"	12"	12"	
	47	12"	12"	12"	12"	12"	12"	12"	12"	10"	
	54	12"	12"	12"	12"	12"	12"	12"	12"	7"	
66	12"	12"	12"	12"	12"	12"	11"	11"	6"		



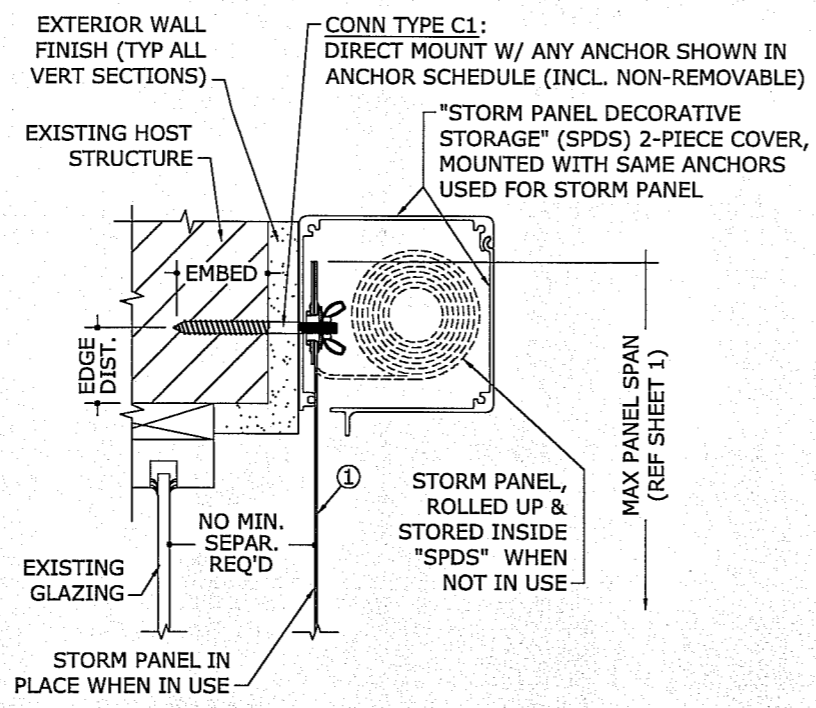
1 MOUNTING SECTION
2 3" = 1'-0" VERT SECTION



2 MOUNTING SECTION
2 3" = 1'-0" VERT SECTION

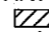


3 MOUNTING SECTION
2 3" = 1'-0" VERT SECTION





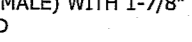

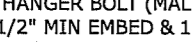
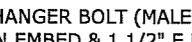


4 "SPDS" SECTION (OPTIONAL)
2 3" = 1'-0" VERT SECTION

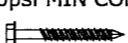
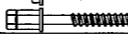


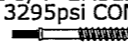

ANCHOR NOTES:

- 1) 1/4" TAPCONS SHALL BE BY ITW OR BY ELCO, AS LISTED IN APPROPRIATE ANCHOR SCHEDULE. "ELCO PANELMATE" ANCHORS MAY BE MALE OR FEMALE ONLY, AS ILLUSTRATED.
- 2) ENSURE MINIMUM EDGE DISTANCE FOR ALL ANCHORS PER RESPECTIVE ANCHOR SCHEDULE. EDGE DISTANCE OF 3/4" IS ACCEPTABLE FOR ANCHORS TO WOOD, EXCEPT FOR 5/16" AND 3/8" HANGER BOLTS. REFERENCE ANCHOR SCHEDULE FOR MINIMUM EDGE DISTANCE REQUIREMENTS FOR THESE ANCHORS.
- 3) MINIMUM EMBEDMENT SHALL BE AS NOTED IN ANCHOR SCHEDULE. MINIMUM EMBEDMENT AND EDGE DISTANCE EXCLUDES STUCCO, FOAM, BRICK, AND OTHER WALL FINISHES.
- 4) ANCHORS SHALL BE INSTALLED IN ACCORDANCE WITH MANUFACTURERS' RECOMMENDATIONS.
- 5) WHERE EXISTING STRUCTURE IS WOOD FRAMING, EXISTING CONDITIONS MAY VARY. FIELD VERIFY THAT ANCHORS ARE INTO ADEQUATE WOOD FRAMING MEMBERS, NOT INTO PLYWOOD.
- 6) ANCHORS FASTENED TO NARROW FACE OF STUD FRAMING SHALL BE LOCATED IN CENTER OF NOMINAL 2x4 (MIN) WOOD STUD (i.e. 3/4" EDGE DISTANCE IS ACCEPTABLE FOR ANCHORS TO WOOD FRAMING). WOOD STRUCTURE SHALL BE "SOUTHERN PINE" G=0.55, "SPRUCE-PINE-FIR" G=0.42, OR GREATER DENSITY.
- 7) ANCHOR SCHEDULE APPLIES FOR ALL PRODUCTS CERTIFIED HEREIN, BUT ONLY PROVIDES MAXIMUM ALLOWABLE ANCHOR SPACING. MAXIMUM ALLOWABLE SPANS AND PRESSURES INDICATED IN SPAN SCHEDULE SHALL APPLY.
- 8) MACHINE SCREWS SHALL HAVE MINIMUM OF 1/4" ENGAGEMENT OF THREADS IN BASE ANCHOR AND MAY HAVE A PAN HEAD, TRUSS HEAD, OR WAFER HEAD ("SIDEWALK BOLT") U.N.O.
- 9)  DESIGNATES ANCHOR CONDITIONS WHICH ARE NOT ACCEPTABLE FOR USE.
- 10) * DESIGNATES ANCHORS WHICH ARE REMOVABLE AND MAY BE USED FOR DIRECT MOUNT INSTALLATIONS.

ANCHOR SCHEDULE 2

HOST STRUCT.	ANCHOR	LOAD (psf)	3/4" MIN EDGE DISTANCE (UNLESS NOTED OTHERWISE)								
			Spans Up To 4'-0"			Spans Up To 6'-0"			Spans Up To 9'-3"		
			C1	C2	C3	C1	C2	C3	C1	C2	C3
WOOD (G=0.42)	1/4" LAG SCREW WITH MIN 2-3/32" THREAD PENETR. 	30	12"	12"	5"	10"	10"	3"	6"	6"	/
		38	12"	12"	4"	8"	8"	3"	5"	5"	/
		47	9"	9"	3"	6"	6"	/	4"	4"	/
		54	8"	8"	3"	5"	5"	/	4"	4"	/
		66	7"	7"	/	4"	4"	/	3"	3"	/
	1/4" TAPCON (ELCO OR ITW) OR #14 WOOD SCREW WITH 1-1/2" MIN EMBED 	30	12"	12"	5"	9"	9"	3"	6"	6"	/
		38	11"	11"	4"	7"	7"	3"	5"	5"	/
		47	9"	9"	3"	6"	6"	/	4"	4"	/
		54	8"	8"	3"	5"	5"	/	3"	3"	/
		66	6"	6"	/	4"	4"	/	3"	3"	/
	1/4" ITW TAPCON SG WITH 1-1/2" MIN EMBED * 	30	12"	12"	12"	12"	12"	12"	11"	11"	9"
		38	12"	12"	12"	12"	12"	11"	9"	9"	7"
		47	12"	12"	12"	11"	11"	9"	7"	7"	5"
		54	12"	12"	11"	9"	9"	8"	6"	6"	4"
		66	11"	11"	9"	8"	8"	6"	5"	5"	3"
	3/16" ITW SAMMY SUPER SCREW WITH 1-1/2" MIN EMBED * 	30	12"	12"	12"	12"	12"	12"	12"	12"	8"
		38	12"	12"	12"	12"	12"	10"	10"	10"	6"
		47	12"	12"	12"	12"	12"	8"	8"	8"	5"
		54	12"	12"	10"	11"	11"	7"	7"	7"	4"
		66	12"	12"	8"	9"	9"	5"	6"	6"	3"
1/4" ELCO PANELMATE (MALE OR FEMALE) WITH 1-7/8" MIN EMBED * 	30	12"	12"	12"	12"	12"	12"	12"	12"	9"	
	38	12"	12"	12"	12"	12"	10"	11"	11"	7"	
	47	12"	12"	12"	12"	12"	8"	9"	9"	5"	
	54	12"	12"	11"	12"	12"	7"	8"	8"	4"	
	66	12"	12"	9"	10"	10"	6"	7"	7"	3"	
1/4" HANGER BOLT (MALE) W/ 2 1/2" MIN EMBED & 1 1/4" E.D. * 	30	12"	12"	5"	10"	10"	3"	6"	6"	/	
	38	12"	12"	4"	8"	8"	3"	5"	5"	/	
	47	9"	9"	3"	6"	6"	/	4"	4"	/	
	54	8"	8"	3"	5"	5"	/	4"	4"	/	
	66	7"	7"	/	4"	4"	/	3"	3"	/	
5/16" HANGER BOLT (MALE) W/ 2 1/2" MIN EMBED & 1 1/4" E.D. * 	30	12"	12"	12"	12"	12"	12"	12"	11"		
	38	12"	12"	12"	12"	12"	12"	12"	12"	8"	
	47	12"	12"	12"	12"	12"	10"	12"	12"	6"	
	54	12"	12"	12"	12"	12"	9"	10"	10"	5"	
	66	12"	12"	11"	12"	12"	7"	9"	9"	4"	
3/8" HANGER BOLT (MALE) W/ 3" MIN EMBED & 1 1/2" E.D. * 	30	12"	12"	12"	12"	12"	12"	12"	12"		
	38	12"	12"	12"	12"	12"	12"	12"	12"	10"	
	47	12"	12"	12"	12"	12"	12"	12"	12"	7"	
	54	12"	12"	12"	12"	12"	11"	11"	11"	6"	
	66	12"	12"	12"	12"	12"	9"	9"	9"	5"	

ANCHOR SCHEDULE 3

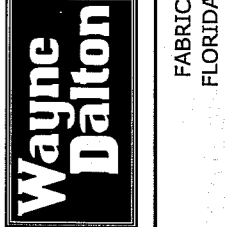
HOST STRUCT.	ANCHOR	LOAD (psf)	2" MIN EDGE DISTANCE									2-1/2" MIN EDGE DISTANCE											
			Spans Up To 4'-0"			Spans Up To 6'-0"			Spans Up To 9'-3"			Spans Up To 4'-0"			Spans Up To 6'-0"			Spans Up To 9'-3"					
			C1	C2	C3	C1	C2	C3	C1	C2	C3	C1	C2	C3	C1	C2	C3	C1	C2	C3			
CONCRETE	1/4" TAPCON (ELCO OR ITW) WITH 1-3/4" EMBED (3320psi MIN CONC) 	30	12"	12"	12"	12"	12"	10"	12"	12"	7"	12"	12"	12"	12"	12"	12"	12"	12"	8"	12"	12"	8"
		38	12"	12"	12"	12"	12"	8"	12"	12"	5"	12"	12"	12"	12"	12"	12"	12"	12"	12"	12"	12"	6"
		47	12"	12"	10"	12"	12"	6"	9"	9"	4"	12"	12"	12"	12"	8"	12"	12"	12"	12"	12"	12"	5"
		54	12"	12"	8"	12"	12"	6"	8"	8"	3"	12"	12"	10"	12"	7"	10"	10"	10"	10"	10"	10"	4"
		66	12"	12"	7"	10"	10"	5"	7"	7"	3"	12"	12"	9"	12"	6"	9"	9"	9"	9"	9"	9"	4"
	1/4" ELCO PANELMATE WITH 1-3/4" EMBEDMENT (MIN 3000psi CONC) * 	30	12"	12"	12"	12"	12"	12"	12"	12"	11"	12"	12"	12"	12"	12"	12"	12"	12"	12"	12"	12"	12"
		38	12"	12"	12"	12"	12"	12"	12"	12"	8"	12"	12"	12"	12"	12"	12"	12"	12"	12"	12"	12"	11"
		47	12"	12"	12"	12"	12"	11"	12"	12"	6"	12"	12"	12"	12"	12"	12"	12"	12"	12"	12"	12"	8"
		54	12"	12"	12"	12"	12"	9"	12"	12"	5"	12"	12"	12"	12"	11"	12"	12"	12"	12"	12"	12"	7"
		66	12"	12"	11"	12"	12"	7"	10"	10"	4"	12"	12"	12"	12"	9"	12"	12"	12"	12"	12"	12"	5"
	1/4-20 ALL POINTS SOLID-SET ANCHOR W/ 7/8" EMBED (MIN 3000psi CONC) * 	30	12"	12"	12"	12"	12"	12"	12"	12"	12"	12"	12"	12"	12"	12"	12"	12"	12"	12"	12"	12"	12"
		38	12"	12"	12"	12"	12"	12"	12"	12"	8"	12"	12"	12"	12"	12"	12"	12"	12"	12"	12"	12"	9"
		47	12"	12"	12"	12"	12"	10"	12"	12"	6"	12"	12"	12"	12"	11"	12"	12"	12"	12"	12"	12"	7"
		54	12"	12"	12"	12"	12"	9"	12"	12"	5"	12"	12"	12"	12"	10"	12"	12"	12"	12"	12"	12"	6"
		66	12"	12"	11"	12"	12"	7"	12"	12"	4"	12"	12"	12"	12"	8"	12"	12"	12"	12"	12"	12"	5"
	1/4-20 POWERS CALK-IN WITH 7/8" EMBEDMENT (MIN 3000psi CONC) * 	30	12"	12"	12"	12"	12"	12"	12"	12"	8"	12"	12"	12"	12"	12"	12"	12"	12"	12"	12"	12"	9"
		38	12"	12"	12"	12"	12"	10"	10"	10"	6"	12"	12"	12"	12"	11"	12"	12"	12"	12"	12"	12"	7"
		47	12"	12"	12"	12"	12"	8"	8"	8"	5"	12"	12"	12"	12"	9"	11"	11"	11"	11"	11"	11"	5"
		54	12"	12"	10"	11"	11"	7"	7"	7"	4"	12"	12"	12"	12"	8"	10"	10"	10"	10"	10"	10"	4"
		66	12"	12"	9"	9"	9"	6"	6"	6"	3"	12"	12"	12"	12"	6"	8"	8"	8"	8"	8"	8"	4"
1/4" ITW TAPCON SG OR SAMMY SUPER SCREW W/ MIN 1 3/4" EMBEDMENT (MIN 3295psi CONC) * 	30	12"	12"	12"	12"	12"	12"	12"	12"	9"	12"	12"	12"	12"	12"	12"	12"	12"	12"	12"	12"	11"	
	38	12"	12"	12"	12"	12"	11"	12"	12"	7"	12"	12"	12"	12"	12"	12"	12"	12"	12"	12"	12"	9"	
	47	12"	12"	11"	12"	12"	9"	12"	12"	5"	12"	12"	12"	12"	11"	12"	12"	12"	12"	12"	12"	7"	
	54	12"	12"	11"	12"	12"	7"	10"	10"	4"	12"	12"	12"	12"	9"	12"	12"	12"	12"	12"	12"	5"	
	66	12"	12"	9"	12"	12"	6"	9"	9"	4"	12"	12"	12"	12"	8"	10"	10"	10"	10"	10"	10"	4"	
3/8-16 POWERS CALK-IN W/ 1 1/4" EMBED (MIN 3000psi CONC) * 	30	12"	12"	12"	12"	12"	12"	12"	12"	12"	12"	12"	12"	12"	12"	12"	12"	12"	12"	12"	12"	12"	
	38	12"	12"	12"	12"	12"	12"	12"	12"	11"	12"	12"	12"	12"	12"	12"	12"	12"	12"	12"	12"	12"	
	47	12"	12"	12"	12"	12"	12"	12"	12"	9"	12"	12"	12"	12"	12"	12"	12"	12"	12"	12"	12"	11"	
	54	12"	12"	12"	12"	12"	12"	12"	12"	7"	12"	12"	12"	12"	12"	12"	12"	12"	12"	12"	12"	9"	
	66	12"	12"	12"	12"	12"	10"	12"	12"	6"	12"	12"	12"	12"	12"	12"	12"	12"	12"	12"	12"	8"	

F:\01 Project Files\Wayne-Dalton (WDF)\2004 Jobs\04-WDF-0004 Fabric-Shield Storm Panel + Tracks (FSA)\04-WDF-0004 Fabric-Shield Storm Panel + Tracks (FSA).dwg

04/13/2007 - 2:33pm kelih

LICENSED AFFILIATE OF
ENGINEERING EXPRESS®
160 SW 12th AVENUE, #106
DEERFIELD BEACH, FL 33442
PH: (954) 354-0660 FAX: (954) 354-0443
WWW.ENGEXP.COM
CERT OF AUTH #985

MANUFACTURED BY:
WAYNE-DALTON CORP
3395 ADDISON DRIVE
PENSACOLA, FL 32514
www.wayne-dalton.com



REMARKS	DWN	CHKD	DATE
ADDL ANCHORS	KL	CL	04/13/07
ANCHOR SCHED MODS	CL	FLB	10/5/04
2004 FBC	CL	FLB	8/5/05
ADD *SPDS* OPTION	CL	FLB	11/17/05
OPTL ANCHORS AT SIDES	CL	FLB	4/10/06

THIS DOCUMENT IS THE PROPERTY OF FRANK L. BENNARDO, P.E. AND SHALL NOT BE REPRODUCED IN WHOLE OR PART WITHOUT WRITTEN CONSENT OF FRANK L. BENNARDO, P.E. OTHER MARKINGS TO THIS DOCUMENT ARE NOT PERMITTED AND INVALIDATE OUR CERTIFICATION.

COPYRIGHT 2004 FRANK L. BENNARDO, P.E.

04-WDF-0004
PAGE SCALE:
DESCRIPTION:
WAYNE-DALTON PART #317477

ANCHOR SCHEDULE 4

HOST STRUCT.	ANCHOR	LOAD (psf)	2" MIN EDGE DISTANCE									2-1/2" MIN EDGE DISTANCE															
			Spans Up To 4'-0"			Spans Up To 6'-0"			Spans Up To 9'-3"			Spans Up To 4'-0"			Spans Up To 6'-0"			Spans Up To 9'-3"									
			CONN TYPE			CONN TYPE			CONN TYPE			CONN TYPE			CONN TYPE			CONN TYPE									
			C1	C2	C3	C1	C2	C3	C1	C2	C3	C1	C2	C3	C1	C2	C3	C1	C2	C3	C1	C2	C3				
HOLLOW BLOCK	1/4" TAPCON (ELCO) WITH 1-1/4" EMBED	30	12"	12"	12"	12"	12"	10"	12"	12"	6"	12"	12"	12"	12"	12"	12"	12"	12"	8"	12"	12"	12"	12"	12"	8"	
		38	12"	12"	12"	12"	12"	12"	8"	12"	12"	5"	12"	12"	12"	12"	12"	10"	12"	12"	6"	12"	12"	12"	12"	12"	6"
		47	12"	12"	9"	12"	12"	6"	10"	10"	4"	12"	12"	12"	12"	12"	8"	12"	12"	5"	12"	12"	12"	12"	12"	5"	
		54	12"	12"	8"	12"	12"	5"	8"	8"	3"	12"	12"	10"	12"	12"	7"	10"	10"	4"	12"	12"	10"	12"	12"	4"	
		66	12"	12"	7"	10"	10"	4"	7"	7"	3"	12"	12"	8"	12"	12"	6"	9"	9"	3"	12"	12"	8"	12"	12"	3"	
	1/4" TAPCON (ITW) WITH 1-1/4" EMBED	30	12"	12"	6"	11"	11"	4"	7"	7"	3"	12"	12"	7"	12"	12"	5"	9"	9"	3"	12"	12"	7"	12"	12"	3"	
		38	12"	12"	5"	8"	8"	3"	5"	5"	///	12"	12"	6"	11"	11"	4"	7"	7"	///	12"	12"	6"	11"	11"	///	
		47	10"	10"	4"	7"	7"	///	4"	4"	///	12"	12"	5"	9"	9"	3"	6"	6"	///	12"	12"	5"	9"	9"	///	
		54	9"	9"	3"	6"	6"	///	4"	4"	///	11"	11"	4"	7"	7"	3"	5"	5"	///	11"	11"	4"	7"	7"	///	
		66	7"	7"	3"	5"	5"	///	3"	3"	///	9"	9"	3"	6"	6"	2"	4"	4"	///	9"	9"	3"	6"	6"	///	
	1/4" ELCO PANELMATE (MALE OR FEMALE) WITH MIN 1-1/4" EMBEDMENT *	30	12"	12"	12"	12"	12"	9"	11"	11"	6"	12"	12"	12"	12"	12"	10"	12"	12"	6"	12"	12"	12"	12"	12"	6"	
		38	12"	12"	11"	12"	12"	7"	9"	9"	5"	12"	12"	11"	12"	12"	8"	10"	10"	5"	12"	12"	11"	12"	12"	5"	
47		12"	12"	9"	11"	11"	6"	7"	7"	4"	12"	12"	9"	12"	12"	6"	8"	8"	4"	12"	12"	9"	12"	12"	4"		
54		12"	12"	8"	10"	10"	5"	6"	6"	3"	12"	12"	8"	11"	///	5"	7"	7"	3"	12"	12"	8"	11"	///	3"		
66		12"	12"	6"	8"	8"	4"	5"	5"	///	12"	12"	7"	9"	9"	4"	6"	6"	3"	12"	12"	7"	9"	9"	3"		
1/4" ITW TAPCON SG OR SAMMY SUPER SCREW WITH MIN 1 1/4" EMBED *	30	12"	12"	12"	12"	12"	12"	12"	8"	12"	12"	11"	12"	12"	7"	12"	12"	5"	12"	12"	11"	12"	12"	5"			
	38	12"	12"	12"	12"	12"	9"	11"	11"	6"	12"	12"	9"	12"	12"	6"	9"	9"	4"	12"	12"	9"	12"	12"	4"		
	47	12"	12"	11"	12"	12"	8"	9"	9"	5"	12"	12"	7"	12"	12"	5"	8"	8"	3"	12"	12"	7"	12"	12"	3"		
	54	12"	12"	10"	12"	12"	7"	8"	8"	4"	12"	12"	6"	10"	10"	4"	7"	7"	3"	12"	12"	6"	10"	10"	3"		
	66	12"	12"	8"	10"	10"	5"	7"	7"	3"	12"	12"	5"	8"	8"	3"	6"	6"	2"	12"	12"	5"	8"	8"	2"		
1/4-20 ALL POINTS SOLID-SET ANCHOR WITH MIN 7/8" EMBEDMENT *	30	12"	12"	12"	12"	12"	12"	12"	8"	12"	12"	12"	12"	12"	11"	12"	12"	7"	12"	12"	12"	12"	12"	7"			
	38	12"	12"	12"	12"	12"	10"	12"	6"	12"	12"	12"	12"	12"	11"	12"	12"	7"	12"	12"	12"	12"	12"	7"			
	47	12"	12"	12"	12"	12"	8"	10"	5"	12"	12"	12"	12"	12"	9"	12"	12"	5"	12"	12"	12"	12"	12"	5"			
	54	12"	12"	10"	12"	12"	7"	9"	4"	12"	12"	11"	12"	12"	7"	11"	11"	4"	12"	12"	11"	12"	12"	4"			
	66	12"	12"	8"	11"	11"	6"	8"	3"	12"	12"	9"	12"	12"	6"	9"	9"	4"	12"	12"	9"	12"	12"	4"			
1/4-20 POWERS CALK-IN WITH MIN 7/8" EMBEDMENT *	30	12"	12"	9"	12"	12"	6"	9"	4"	12"	12"	11"	12"	12"	7"	12"	12"	5"	12"	12"	11"	12"	12"	5"			
	38	12"	12"	7"	11"	11"	5"	7"	3"	12"	12"	9"	12"	12"	6"	9"	9"	4"	12"	12"	9"	12"	12"	4"			
	47	12"	12"	6"	9"	9"	4"	6"	3"	12"	12"	7"	12"	12"	5"	8"	8"	3"	12"	12"	7"	12"	12"	3"			
	54	12"	12"	5"	8"	8"	4"	5"	///	12"	12"	6"	10"	10"	4"	7"	7"	3"	12"	12"	6"	10"	10"	3"			
	66	10"	10"	4"	6"	6"	3"	4"	///	12"	12"	5"	8"	8"	3"	6"	6"	2"	12"	12"	5"	8"	8"	2"			
5/16" TAPCON (ELCO) WITH MIN 1 1/4" EMBED	30	///	///	///	///	///	///	///	///	12"	12"	12"	12"	12"	10"	12"	12"	7"	12"	12"	12"	12"	12"	7"			
	38	///	///	///	///	///	///	///	///	12"	12"	12"	12"	12"	8"	12"	12"	5"	12"	12"	12"	12"	12"	5"			
	47	///	///	///	///	///	///	///	///	12"	12"	10"	12"	12"	6"	10"	10"	4"	12"	12"	10"	12"	12"	4"			
	54	///	///	///	///	///	///	///	///	12"	12"	8"	12"	12"	6"	9"	9"	///	12"	12"	8"	12"	12"	///			
	66	///	///	///	///	///	///	///	///	12"	12"	7"	11"	11"	5"	8"	8"	///	12"	12"	7"	11"	11"	///			
3/8" RED HEAD LDT W/ MIN 1 1/4" EMBEDMENT	30	///	///	///	///	///	///	///	///	12"	12"	12"	12"	12"	9"	12"	12"	6"	12"	12"	12"	12"	12"	6"			
	38	///	///	///	///	///	///	///	///	12"	12"	10"	12"	12"	7"	12"	12"	5"	12"	12"	10"	12"	12"	5"			
	47	///	///	///	///	///	///	///	///	12"	12"	8"	12"	12"	6"	11"	11"	///	12"	12"	8"	12"	12"	///			
	54	///	///	///	///	///	///	///	///	12"	12"	7"	12"	12"	5"	10"	10"	///	12"	12"	7"	12"	12"	///			
	66	///	///	///	///	///	///	///	///	12"	12"	6"	12"	12"	4"	8"	8"	///	12"	12"	6"	12"	12"	///			
HOLLOW BLOCK	5/16" TAPCON (ELCO) WITH MIN 1 1/4" EMBED	30	12"	12"	12"	12"	12"	11"	12"	7"	///	///	///	///	///	///	///	///	///	///	///	///	///	///	///		
		38	12"	12"	12"	12"	12"	8"	12"	5"	///	///	///	///	///	///	///	///	///	///	///	///	///	///	///		
		47	12"	12"	10"	12"	12"	7"	11"	4"	///	///	///	///	///	///	///	///	///	///	///	///	///	///	///		
		54	12"	12"	9"	12"	12"	6"	10"	///	///	///	///	///	///	///	///	///	///	///	///	///	///	///	///		
		66	12"	12"	7"	12"	12"	5"	9"	///	///	///	///	///	///	///	///	///	///	///	///	///	///	///	///		
	3/8" RED HEAD LDT W/ MIN 1 1/4" EMBEDMENT	30	12"	12"	12"	12"	12"	9"	12"	6"	///	///	///	///	///	///	///	///	///	///	///	///	///	///	///		
		38	12"	12"	11"	12"	12"	7"	12"	5"	///	///	///	///	///	///	///	///	///	///	///	///	///	///	///		
		47	12"	12"	9"	12"	12"	6"	12"	///	///	///	///	///	///	///	///	///	///	///	///	///	///	///	///		
		54	12"	12"	7"	12"	12"	5"	10"	///	///	///	///	///	///	///	///	///	///	///	///	///	///	///	///		
		66	12"	12"	6"	12"	12"	4"	9"	///	///	///	///	///	///	///	///	///	///	///	///	///	///	///	///		
	3/8-16 POWERS CALK-IN W/ MIN 1 1/4" EMBEDMENT *	30	12"	12"	12"	12"	12"	12"	12"	9"	12"	12"	12"	12"	12"	12"	12"	12"	10"	12"	12"	12"	12"	12"	10"		
		38	12"	12"	12"	12"	12"	11"	12"	7"	12"	12"	12"	12"	12"	12"	12"	12"	8"	12"	12"	12"	12"	12"	8"		
47		12"	12"	12"	12"	12"	9"	12"	5"	12"	12"	12"	12"	12"	10"	12"	12"	6"	12"	12"	12"	12"	12"	6"			
54		12"	12"	11"	12"	12"	7"	12"	5"	12"	12"	12"	12"	12"	9"	12"	12"	5"	12"	12"	12"	12"	12"	5"			
66		12"	12"	9"	12"	12"	6"	10"	4"	12"	12"	11"	12"	12"	7"	12"	12"	5"	12"	12"	11"	12"	12"	5"			

FRANK L. BENNARDO, P.E.
PE0046549

04/13/2007

LICENSED AFFILIATE OF
ENGINEERING EXPRESS
160 SW 12th AVENUE, #106
DEERFIELD BEACH, FL 33442
Ph: (954) 354-0660 Fax: (954) 354-0443
WWW.ENGINEXP.COM
CERT OF AUTH #8685

MANUFACTURED BY:
WAYNE-DALTON CORP
3395 ADDISON DRIVE
PENSACOLA, FL 32514
www.wayne-dalton.com

Wayne Dalton
FABRIC-SHIELD STORM PANEL
FLORIDA STATEWIDE APPROVAL

REMARKS	DWN	CHKD	DATE
ADD'L ANCHORS	KL	CL	04/13/07
ANCHOR SCHED MODS	CL	FLB	10/5/04
2004 FBC	CL	FLB	8/5/05
ADD' SPOS' OPTION	CL	FLB	11/17/05
OPT'L ANCHORS AT SIDES	CL	FLB	4/10/06

THIS DOCUMENT IS THE PROPERTY OF FRANK L. BENNARDO, P.E. AND SHALL NOT BE REPRODUCED IN WHOLE OR PART WITHOUT WRITTEN CONSENT OF FRANK L. BENNARDO, P.E. REVISIONS, AS SHOWN, INDICATING OTHERWISE, ARE NOT PERMITTED AND INVALIDATE OUR CERTIFICATION.
COPYRIGHT 2004 FRANK L. BENNARDO P.E.

04-WDF-0004
PAGE SCALE:
DESCRIPTION:
WAYNE-DALTON PART #317477

4